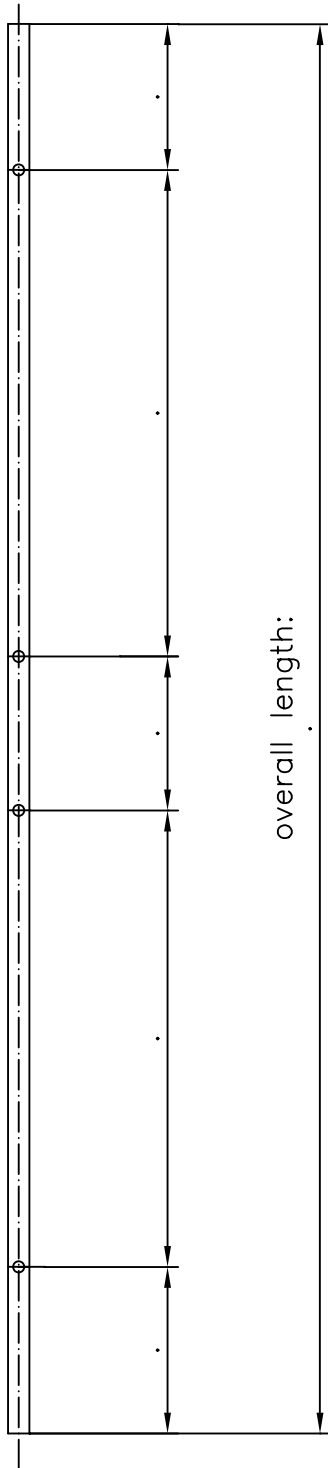


MANET sliding door system
 dimension sliding door track/wall fixing

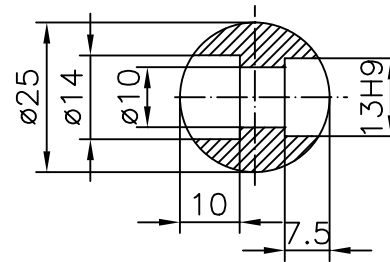


with 4 fixing hole positions

distance between the single point fixings: max. 800mm



overall length:



holes in the sliding door track
 for wall fixing

1:1

drill holes angled with a tolerance
 of $\pm 0,2$ to one another
 the ends of the track are machine faced
 and canted

max. tolerance of $\pm 0,3$
 (from the first to the last drill hole)