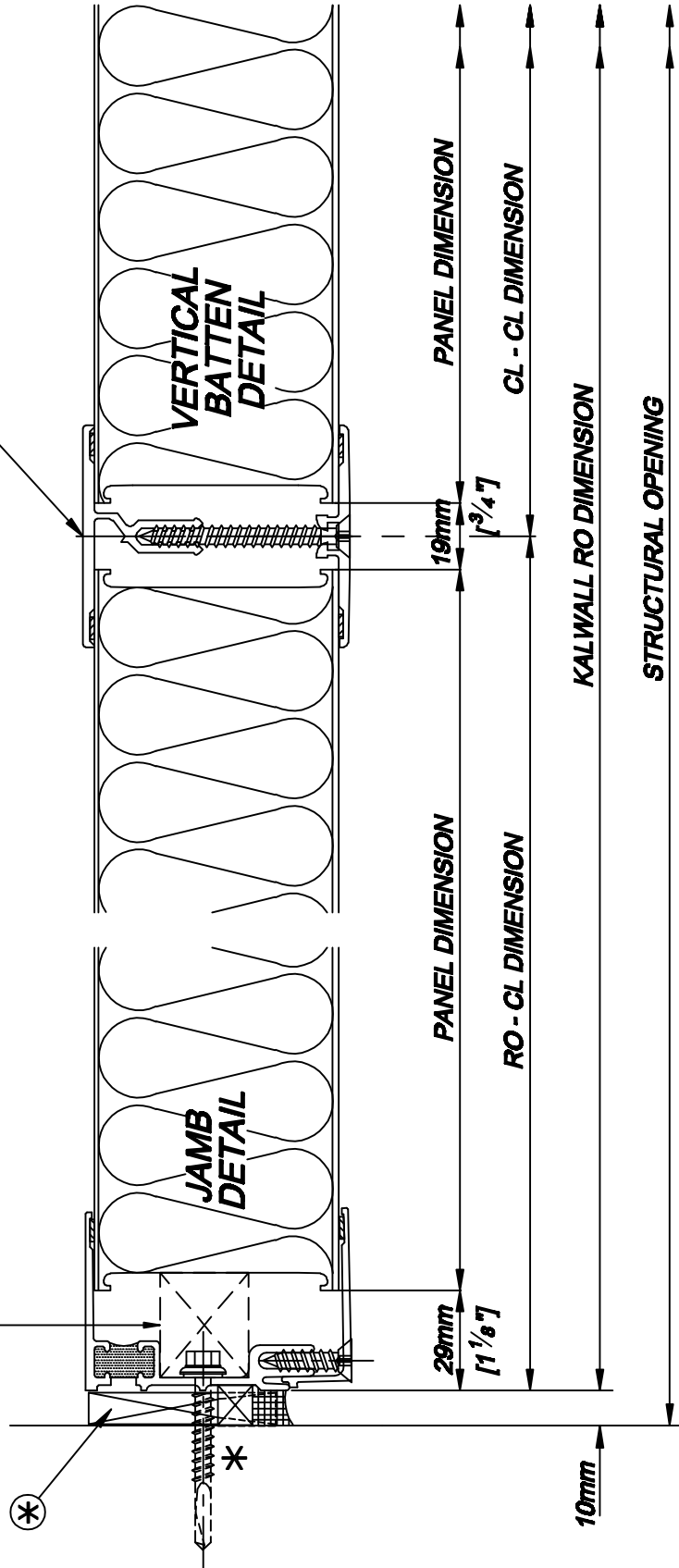
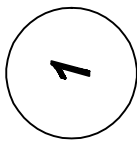
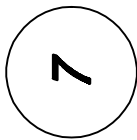
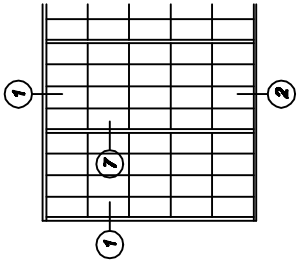


\* DENOTES CONTINUOUS SUPPORT STRUCTURE NOT BY KALWALL INSTALLER  
 (\* DENOTES ADJUSTMENT SHIMS TO BE SUPPLIED BY KALWALL INSTALLER TO ACCOMMODATE SECONDARY STEEL TOLERANCES, ENGINEER TO ADVISE TOLERANCES.

Note: 2 aluminium or douglas fir jamb spacers blocks to be fastened to jamb near head and sill. For multiple panel RO's blocks are to be tight to panels as shown.

KEY ELEVATION  
 [PORTRAIT APPLICATION]  
 64mm [2 1/2"] wall batten.



**KALWALL STANDARD JAMB & VERTICAL BATTEN [2 1/2"] THERMALLY BROKEN WALL PANEL DETAILS**

Stokes Systems Ltd. 1, Banstead road, Purley, Surrey. CR6 3EB  
 Tel: 020 8800 7067 Fax: 020 8800 6707 Email: design@stokes.co.uk

This drawing is copyright and may not be reproduced in whole or in part without written consent of Stokes Systems Limited.

**STOKES**  
 STOAKES SYSTEMS LTD

Detail Ref.

**08T-STD/08**

Date.	Jan. 2004	Rev.	D
System.	08T	Scale.	1-2