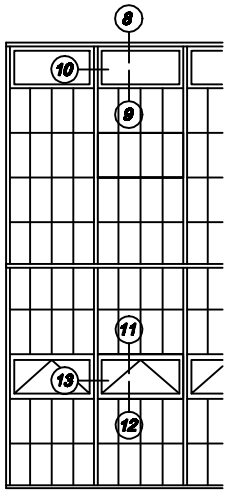
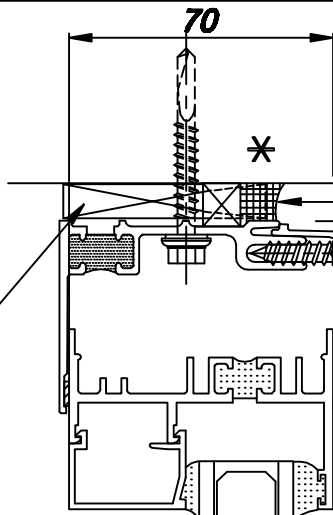


08T-STD/10



KEY ELEVATION



8

Site applied low modulus silicone weather seal standard colour to be agreed with architect by Kalwall Installer.

10mm

29mm

[1 1/8"]

FIXED LIGHT

WINDOW DIMENSION

KALWALL RO DIMENSION

STRUCTURAL OPENING

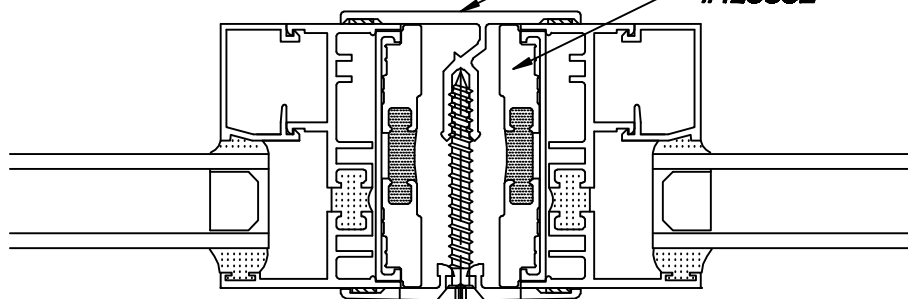
9

10

64mm [2 1/2"] WALL BATTEN

#12SSSE

PANEL DIMENSION



WINDOW DIMENSION

32mm

WINDOW DIMENSION

[1 1/4"]

* DENOTES CONTINUOUS SUPPORT STRUCTURE NOT BY KALWALL INSTALLER

⊗ DENOTES ADJUSTMENT SHIMS TO BE SUPPLIED BY KALWALL INSTALLER TO ACCOMMODATE SECONDARY STEEL TOLERANCES, ENGINEER TO ADVISE TOLERANCES.

KALWALL HC-2000 SERIES FIXED LIGHT THERMALLY BROKEN WALL PANEL DETAILS

Stokes Systems Ltd. 1, Banstead road, Purley, Surrey. CR8 3EB
Tel: 020 8990 7067 Fax: 020 8990 5707 Email: design@stokes.co.uk

This drawing is copyright and may not be reproduced in whole or in part without written consent of Stokes Systems Limited.

STOKES
STOAKES SYSTEMS LTD

Detail Ref.

08T-STD/10

Date. Jan. 2004

Rev. D

System. 08T

Scale. 1-2